



innerVue™
DIAGNOSTIC SCOPE SYSTEM

Procedure Setup

ARTHROTEK®
A BIOMET COMPANY



Contents of Procedure Kit



Shelf Drape



6' x 6' IsoDrape with Incise Window and Fluid Catch-Pocket

72" Infusion Tubing with Spike



Three-Way Valve



DuraPrep[®] Surgical Solution



20 ml Syringe

48" Extension Tubing with Connectors



#11 Scalpel

22 Gauge Needle for Syringe



Steri-Strip[®] Closures (6 pk.)



Two Adhesive Strips



Suggested Procedure Kit Set-up

Pre-Sterile Preparation



Place patient in a relaxed, comfortable position. Inject local anesthetic into the joint.



Open InnerVue™ Disposable 1.2mm Scope Kit and locate the provided InnerVue™ Patient Procedural CD-ROM and insert in the InnerVue™ System CD Drive. Do not open the disposable scope at this time.

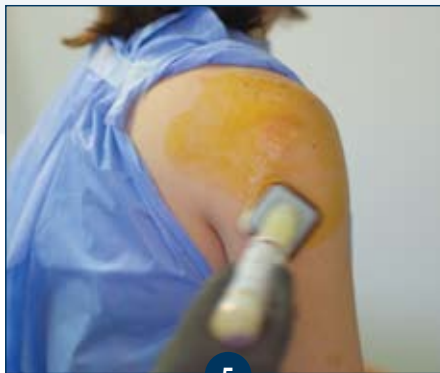


Follow the prompts to set up a patient in the system.

Sterile Preparation



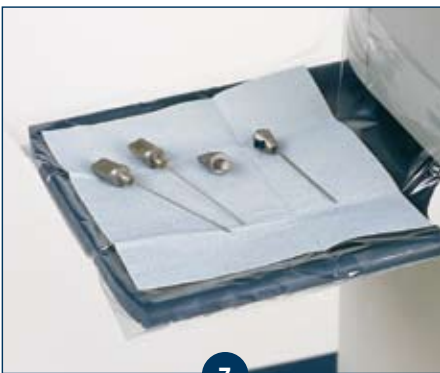
Open InnerVue™ Procedural Kit (All items in the kit must be opened using sterile technique). Drape InnerVue™ System pull-out work surface with the InnerVue™ shelf drape.



Prepare patient scope site with DuraPrep® Surgical Solution.



Drape patient surgical site with the InnerVue™ patient drape.



Open sterilized cannula set and place on system pull-out work surface (reusable set is pictured).

Option for Disposable Cannula Set: Open disposable scope kit and remove disposable cannula set. Place cannula set on work surface.



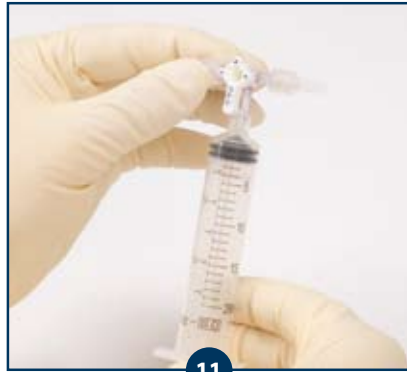
Remove disposable scope from kit and locate the silver mark on the scope and the red mark on the hand piece.



Line up the silver and red marks and snap the scope onto the hand piece until it clicks into place.



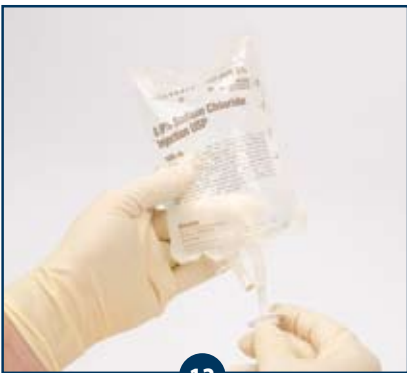
10 Pull the sterile drape down over the hand piece and cable.



11 Connect the 20ml syringe to the middle leg of the three-way T-valve.



12 Connect the 72" tubing to one of the arms of the three-way T-valve. Hand off the fluid supply end of the 72" tubing to non-sterile personell.



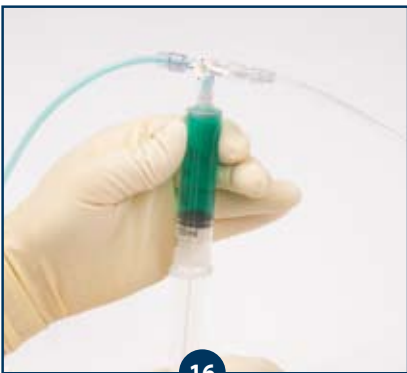
13 The non-sterile will hang a saline bag and spike the bag with the 72" tubing. The blue fluid stop may be utilized to prevent unwanted fluid flow.



14 Connect the 48" tubing to the remaining arm of the three-way T-valve.



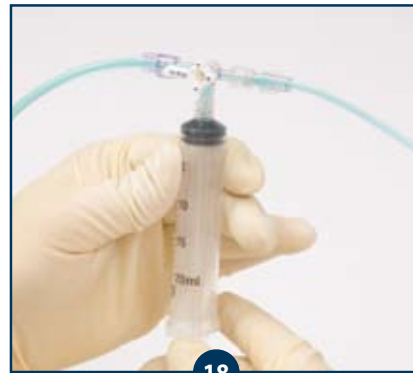
15 Connect the other end of the 48" tubing to the scope sheath. The tubing and components can be placed on the draped pull-out work table until needed (disposable cannula is pictured).



16 Rotate the three-way valve so that the cannula is "Off" and fill the syringe.



17 Rotate the valve so that the saline bag is "Off" and flush. If visualization becomes degraded from blood or other substances in the joint, use the syringe to push the fluid into the joint.



18 Use the three-way valve to re-fill the syringe as needed. Do not over-pressure the joint cavity.

Ordering Information

InnerVue™ Disposable Scope/ Cannula Set Kit

922141

Procedure Kit

922130

Procedure Kit with Surgeon Gown

922131



InnerVue™ is a trademarks of Arthrotek, Inc.

Microban® is a registered trademark of Surco Products, Inc.

Steri-Strip® and DuraPrep® are registered trademarks of Minnesota Mining & Mfg. Co.



ARTHROTEK[®]
A BIOMET COMPANY

P.O. Box 587, Warsaw, IN 46581-0587 • 800.348.9500 ext. 1501 • ©2005 Arthrotek, Inc. All Rights Reserved
web site: www.arthrotek.com • eMail: arthrotek@arthrotek.com
Form No. Y-BMT-939/101505/K

I N V E N T I N G T H E F U T U R E O F A R T H R O S C O P Y

