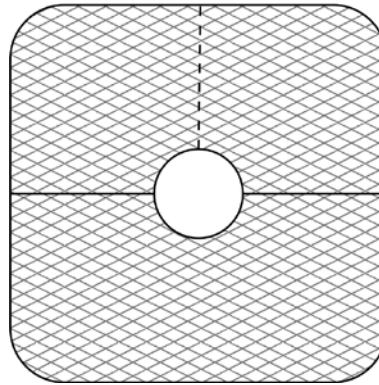
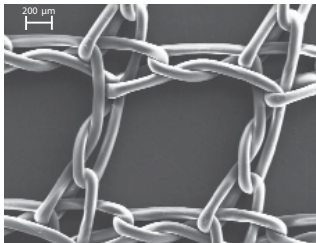


# TiLENE™ Guard Technical Data Sheet

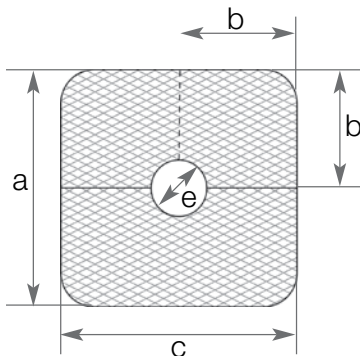
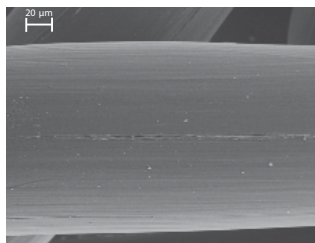
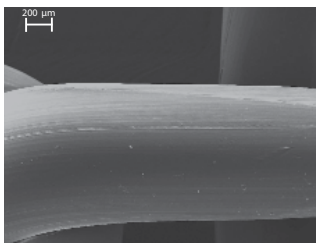
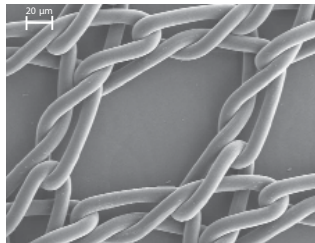
- **Product description:** titanized soft tissue reinforcement implant for hernia repair
- **Material:** polypropylene with covalent bonded titanized surface
- **Layer thickness of titanization:** approx. 30–50 nm
- **Fabric:** knitted out of monofilament fibres
- **Edges:** laser-cut, rounded



**Light 35 g/m<sup>2</sup>**



**Strong 65 g/m<sup>2</sup>**



**Light-weight**  
upper and lower ply

**Dual-Weight**  
inner ply      outer ply

	Light	Light	Strong		
• <b>Weight:</b>	35 g/m <sup>2</sup>	35 g/m <sup>2</sup>	65 g/m <sup>2</sup>		
• <b>Thickness:</b>	0.30 mm	0.30 mm	0.45 mm		
	(DIN EN ISO 5084)				
• <b>Pore Size:</b>	> 1 mm >	1 mm >	1 mm		
• <b>Filament diameter:</b>	58 dtex (90 µm)	58 dtex (90 µm)	103 dtex (120 µm)		
• <b>Porosity 2D:</b>	61%	61 %	53 %		
• <b>Porosity 3D:</b>	87%	87 %	82 %		
• <b>Physiological Elasticity at 16 N:</b>	21 %	21 %	17 %		
• <b>Physiological elasticity at 32 N:</b>	38 %	38 %	29 %		
• <b>Tensile strength (Ball Burst Test):</b>	47N/cm	47 N/cm	62 N/cm		
• <b>Sizes:</b>	a	b	c	d	e
small	140 mm	70 mm	140 mm	70 mm	35 mm
medium	140 mm	70 mm	200 mm	100 mm	35 mm

Exclusive Distributor: Biomet Biologics

Manufactured by:

Certified by: ISO 13485 : 2003

GfE Medizintechnik GmbH

Hoefener Strasse 45 · 90431 Nuremberg, Germany

Phone: +49 (0)911 9315-601 · Fax +49 (0)911 9315-650

info@gfe-medical.com · www.gfe-medical.com

All trademarks herein are the property of Biomet, Inc. or its subsidiaries unless otherwise indicated.

This material is intended for the sole use and benefit of the Biomet Biologics sales force and physicians. It is not to be redistributed, duplicated or disclosed without the express written consent of Biomet.

For product information, including surgical techniques, indications, contraindications, warnings, precautions and potential adverse effects, see the Biomet Biologics website at [www.biometbiologics.com](http://www.biometbiologics.com).



**One Surgeon. One Patient.™**

P.O. Box 587, Warsaw, IN 46581-0587 • 800.348.9500 x 1501

©2009 Biomet Orthopedics • [www.biomet.com](http://www.biomet.com)

Form No. BBI0027.0 • REV093009